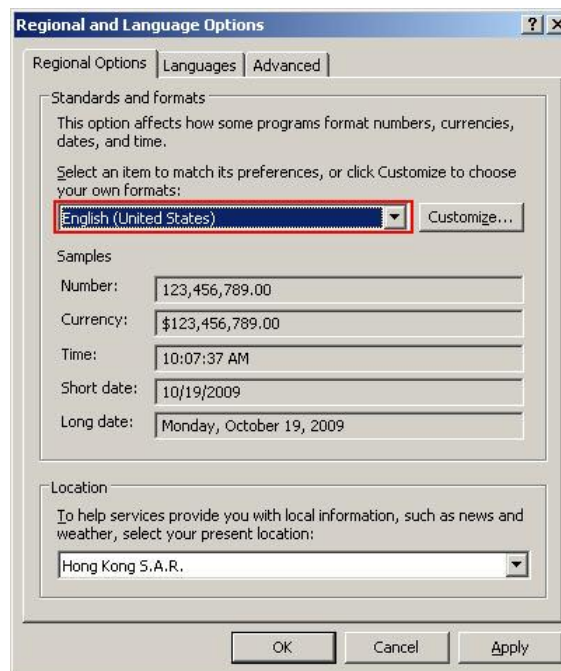


Supplementary installation guide of IBM SPSS Statistics 19 for Chinese Operating System

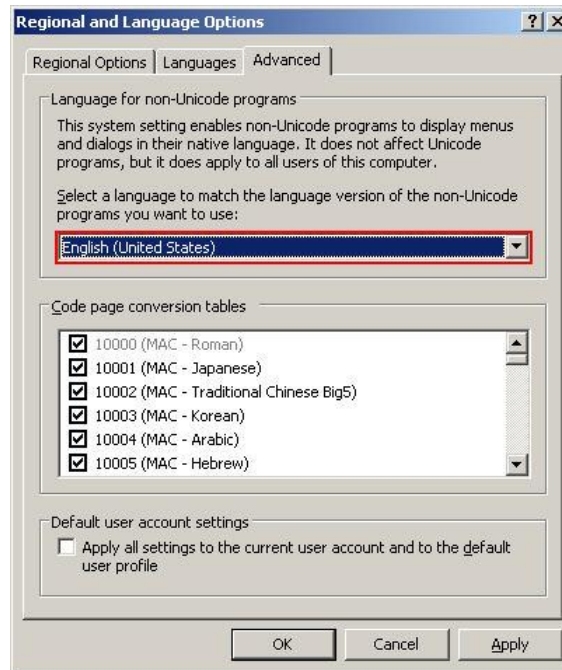
Installing IBM SPSS Statistics 19 in English

By default, the setup program of IBM SPSS Statistics 19 refers to the system language setting of the OS to determine the display language throughout the installation process, and set also the GUI (Graphical User Interface) language when it first starts up. Some users may find it inconvenient especially to those foreign students or researchers who work in Hong Kong and use the computers provided by their institutions. To get rid of this, users could use the following procedure to change the OS' system language such that the installation language of IBM SPSS Statistics 19 will be switched to English.

- Open **Control Panel / 控制台** and choose **Regional and Language Options / 地區及語言選項**
- In the **Regional and Language Options** dialog box, change the **Standards and formats / 標準及格式** to **English (United States) / 英文（美國）**



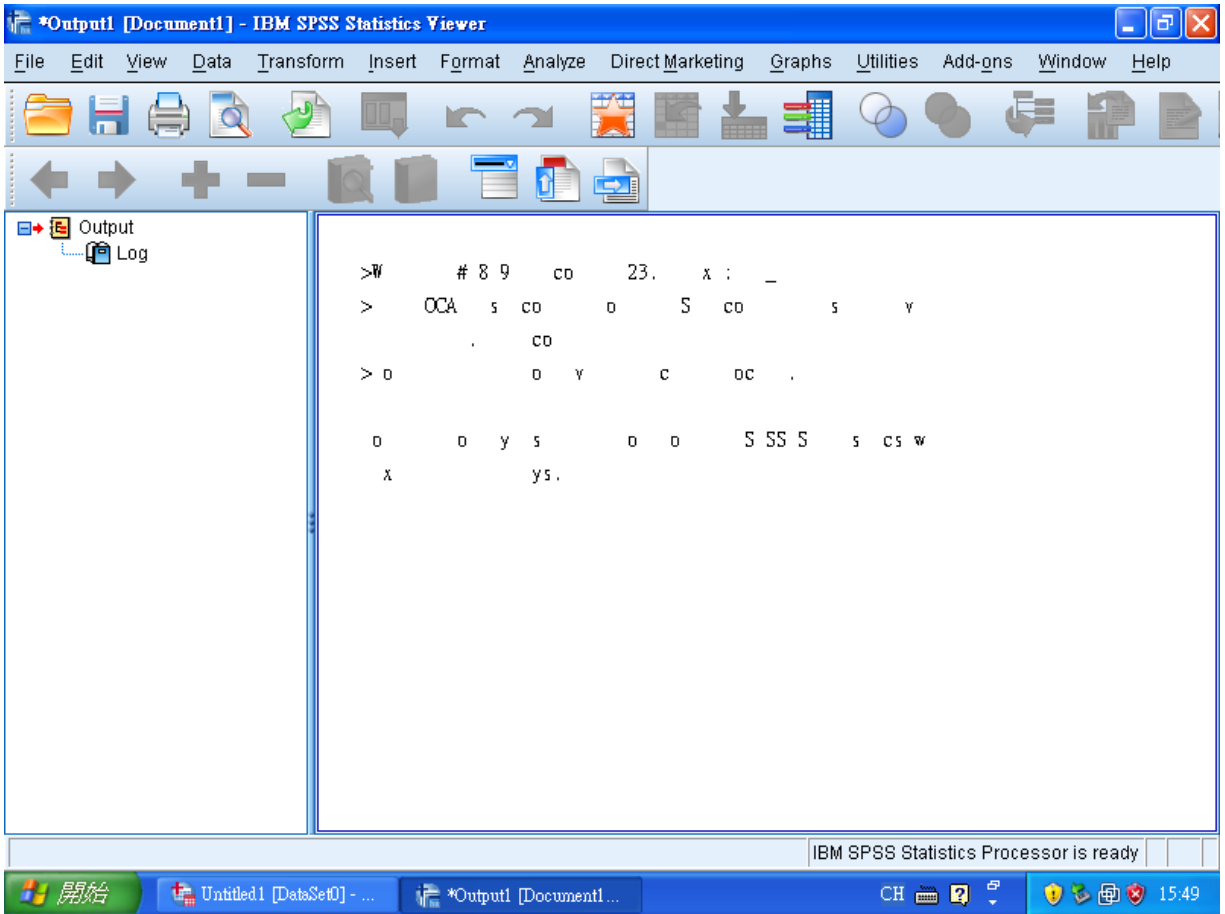
- Switch to **Advanced / 進階** tab, change the **Language for non-Unicode programs / 非 Unicode 程式的語言** to **English (United States) / 英文（美國）**



- Reboot your computer and install IBM SPSS Statistics 19. If you encounter **“unable to open the self-extracting executable file. the file is locked or in use by another process”** message, copy the installation file to a folder that contains no Chinese characters in its path name, e.g. C:\Temp and run the installation file from there.
- Change back the language setting as before if you wish and reboot your computer.

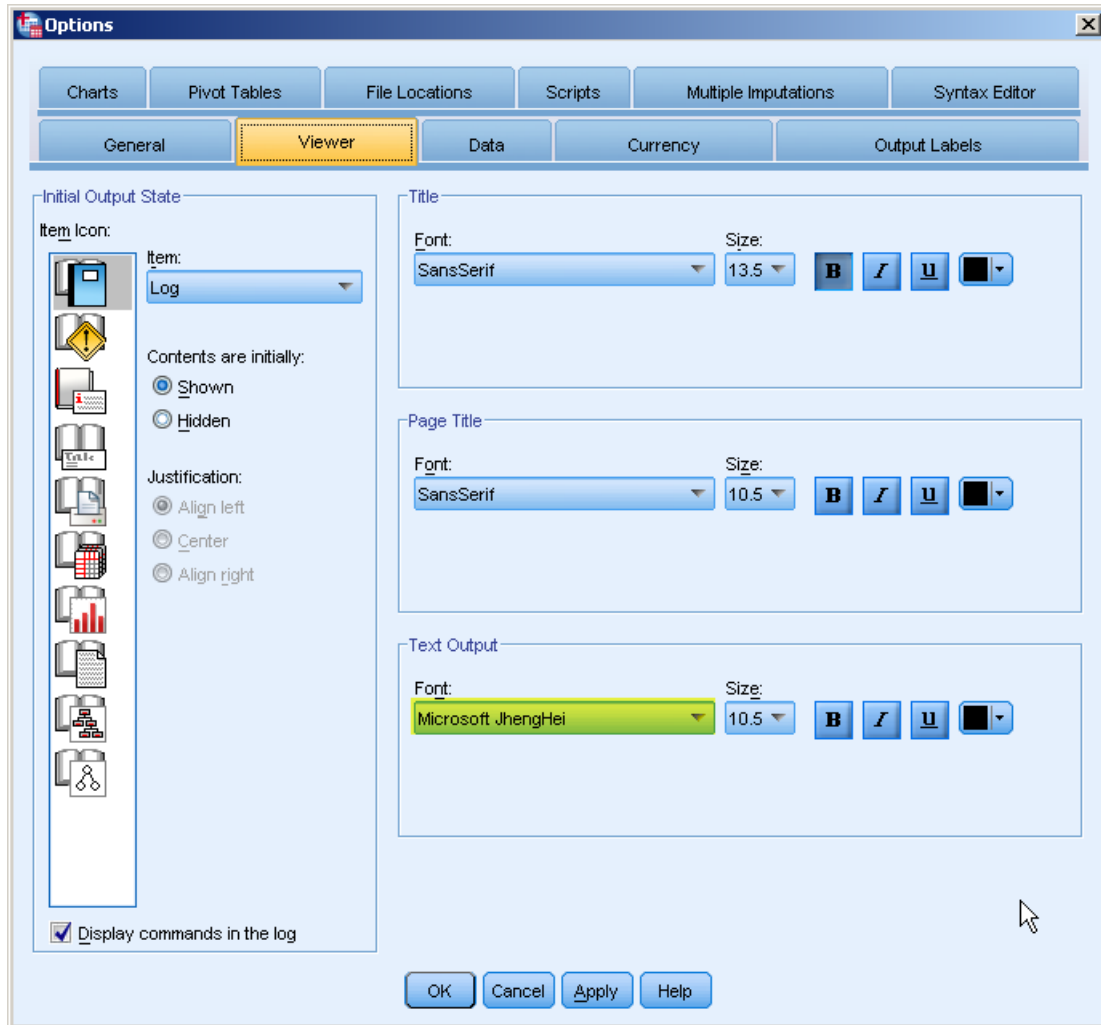
Installing Traditional Chinese ClearType fonts for Windows XP

If you are running IBM SPSS Statistics 19 under Windows XP (Windows Vista and Windows 7 users may skip this section), you may see some unrecognized strings in the output:



In this case you need to install Traditional Chinese ClearType fonts for XP. Please do the following

- Close IBM SPSS Statistics 19
- Download the font file at <http://www.microsoft.com/downloads/en/details.aspx?familyid=87E726A9-5C79-4A73-9347-78A557314DOB&displaylang=en> and install it
- Start IBM SPSS Statistics 19
- From the program menu, choose **Edit->Options** and select **Viewer** tab, change the font for **Text Output** to **Microsoft JhengHei**



Fixing the locale problem in IBM SPSS Statistics 19

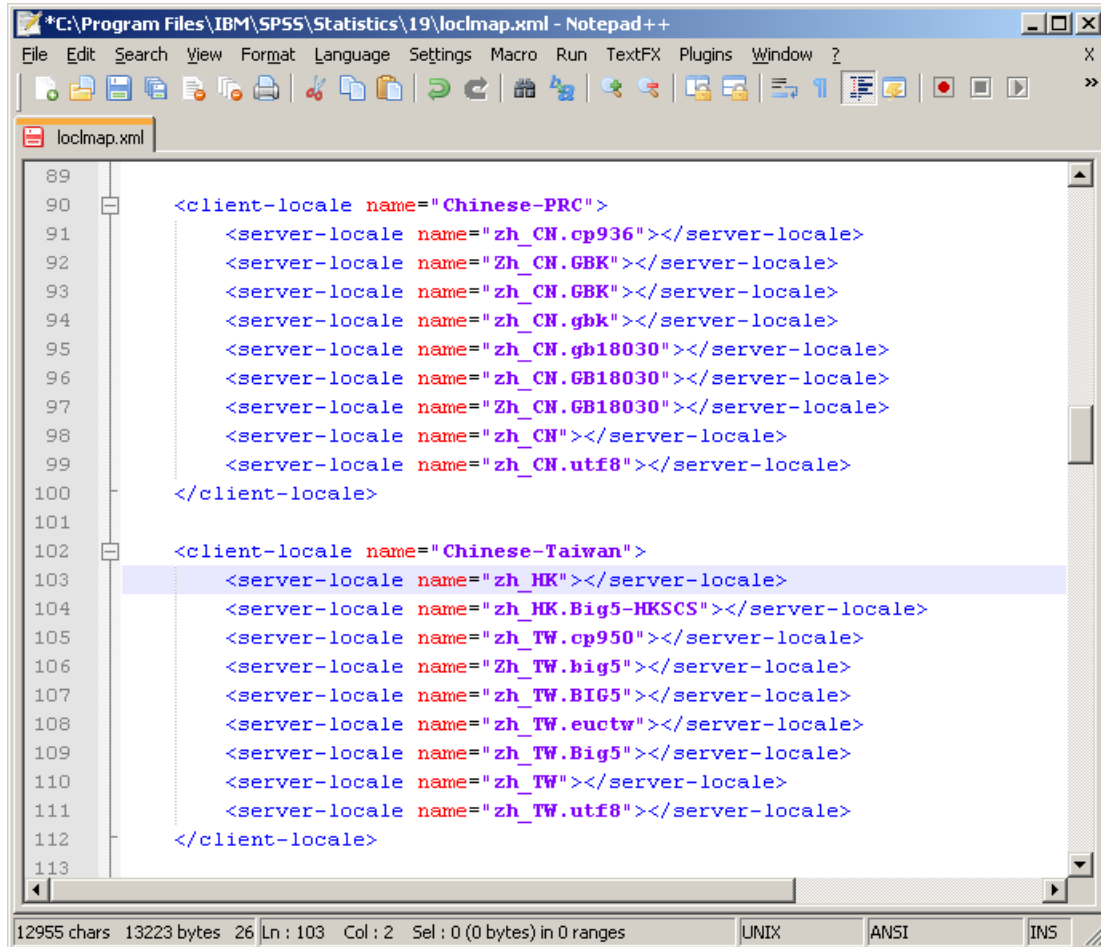
Users may encounter the following warning message in IBM SPSS Statistics 19:

```
Warning # 849 in column 23. Text: zh_HK
The LOCALE subcommand of the SET command has an invalid parameter. It could
not be mapped to a valid backend locale.
```

This text means that IBM SPSS Statistics 19 couldn't find a suitable locale to set as its default language. This problem is caused by the missing locale zh_HK which IBM SPSS Statistics 19 does not originally support in loclmap.xml. Please do the following to solve this problem:

- Log onto the computer as Administrator and locate the file loclmap.xml in the installation directory of IBM SPSS Statistics 19, i.e. **C:\Program Files\IBM\SPSS\Statistics\19**
- Open the xml file in an Editor and scroll down to **Chinese-Taiwan** and add a line **<server-locale name="zh_HK"></server-locale>** above **<server-locale name="zh_HK.Big5-HKSCS"></server-locale>**

so that you have something like the example below (please note the correct spelling within loclmap.xml)



```
*C:\Program Files\IBM\SPSS\Statistics\19\loclmap.xml - Notepad++
File Edit Search View Format Language Settings Macro Run TextFX Plugins Window ?
loclmap.xml
89
90 <client-locale name="Chinese-PRC">
91   <server-locale name="zh_CN.cp936"></server-locale>
92   <server-locale name="zh_CN.GBK"></server-locale>
93   <server-locale name="zh_CN.GBK"></server-locale>
94   <server-locale name="zh_CN.gbks"></server-locale>
95   <server-locale name="zh_CN.gb18030"></server-locale>
96   <server-locale name="zh_CN.GB18030"></server-locale>
97   <server-locale name="zh_CN.GB18030"></server-locale>
98   <server-locale name="zh_CN"></server-locale>
99   <server-locale name="zh_CN.utf8"></server-locale>
100 </client-locale>
101
102 <client-locale name="Chinese-Taiwan">
103   <server-locale name="zh_HK"></server-locale>
104   <server-locale name="zh_HK.Big5-HKSCS"></server-locale>
105   <server-locale name="zh_TW.cp950"></server-locale>
106   <server-locale name="zh_TW.big5"></server-locale>
107   <server-locale name="zh_TW.BIG5"></server-locale>
108   <server-locale name="zh_TW.euctw"></server-locale>
109   <server-locale name="zh_TW.Big5"></server-locale>
110   <server-locale name="zh_TW"></server-locale>
111   <server-locale name="zh_TW.utf8"></server-locale>
112 </client-locale>
113
12955 chars 13223 bytes 26 Ln : 103 Col : 2 Sel : 0 (0 bytes) in 0 ranges
UNIX ANSI INS
```

- You can also use the attached loclmap.xml to replace the original one, i.e. **C:\Program Files\IBM\SPSS\Statistics\19\loclmap.xml**

Manually changing the user interface of the IBM SPSS Statistics 19

If the user interface of your IBM SPSS Statistics 19 is already in Chinese and you would like to change it to English, please follow these procedures to change

- In the IBM SPSS Statistics 19 menu, choose **Edit->Options / 編輯->選項**
- Change the **Output / 輸出** and the **User Interface / 使用者介面** to **English / 英文**

Untitled1 [DataSet0] - IBM SPSS Statistics Data Editor

檔案(F) 編輯(E) 檢視(V) 資料(D) 轉換(T) 分析(A) 直效行銷(M) 統計圖(G) 公用程式(U) 視窗(W) 說明(H)

顯示: 0 個變數 (共有 0 個)

	var	var	var	var	var	var	var	
1								
2								
3								
4								
5								
6								
7								
8								
9								
10								
11								
12								
13								
14								
15								
16								
17								
18								
19								
20								
21								
22								
23								

資料檢視 變數檢視

選項(O)...

IBM SPSS Statistics 處理器已就緒

The image shows the IBM SPSS Statistics Data Editor interface. The title bar reads 'Untitled1 [DataSet0] - IBM SPSS Statistics Data Editor'. The menu bar includes '檔案(F)', '編輯(E)', '檢視(V)', '資料(D)', '轉換(T)', '分析(A)', '直效行銷(M)', '統計圖(G)', '公用程式(U)', '視窗(W)', and '說明(H)'. A toolbar with various icons is located below the menu bar. The main area is a data grid with 23 rows and 8 columns, all labeled 'var'. A context menu is open over the grid, listing various actions such as '復原(U)', '重做(Y)', '剪下(T)', '複製(C)', '貼上(P)', '貼上變數(V)...', '清除(E)', '插入變數(I)', '插入觀察值(O)', '尋找(F)...', '尋找下一個(X)', '取代(R)...', '直接跳到觀察值(S)...', '直接跳到變數(O)...', '直接跳到插補(M)...', and '選項(O)...'. The '選項(O)...' option is highlighted with a mouse cursor. At the bottom, there are tabs for '資料檢視' and '變數檢視', and a status bar indicating 'IBM SPSS Statistics 處理器已就緒'.

選項

一般 瀏覽器 資料 貨幣 輸出標記 圖表 樞軸表 檔案位置 程式檔 多個插補 語法編輯程式

變數清單

顯示標記(L) 顯示名稱(N)

按字母順序的(H) 檔案(F) 測量水準(T)

角色

為節省時間，某些對話方塊可使用預先定義的欄位角色，自動將變數 (欄位) 指派至對話中的清單。

使用預先定義的角色(P)

使用自訂指派

視窗

外觀與感覺(K) : SPSS Standard

啟動時開啓語法視窗(Y)

一次只開啓一個資料集(D)

資料與語法的字元編碼

地區輸入法系統(I)

Unicode (通用字元集)(Y)

當有任一非空白的資料集開啓時，就無法變更字元編碼

輸出

表格中的較小數目沒有科學記號(O)

套用地區設定的位數分組格式至數字值(L)

測量系統(M) : 英寸

語言(G) : 英文

通知 :

出現瀏覽器視窗(A)

捲動到新頁輸出(C)

聲音 : 無(E)

系統嗶聲(S)

聲音(U)

瀏覽(W)...

使用者介面

語言(G) : 英文

確定 取消 套用(A) 輔助說明