

# IBM SPSS Statistics 20 Installation Instructions

---

## Installing IBM SPSS Statistics 20 on Windows Platforms

### *System Requirements for IBM SPSS Statistics*

#### Operating System

- Microsoft Windows XP (32-bit version), Windows Vista (32-bit and 64-bit versions), or Windows 7 (32-bit and 64-bit versions).

#### Configuration

- Intel or AMD processor running at 1 gigahertz (GHz) or higher.
- 1 gigabyte (GB) of RAM or more.
- 800 megabytes (MB) of available hard-disk space. If you install more than one help language, each additional language requires 60-70 MB of disk space.
- If using physical installation media, DVD/CD drive.
- XGA (1024x768) or a higher-resolution monitor.

#### Instructions

- Insert the DVD/CD into your DVD/CD drive.
- Login computer with Administrator account.
- For 32-bit Windows, run [CD Drive]/IBM SPSS Statistics 20.0/Windows/Win32; For 64-bit Windows, run [CD Drive]/IBM SPSS Statistics 20.0/Windows/Win64.
- Activate IBM SPSS Statistics 20 with your authorization code(s).
- Refer Supplementary installation section of this document if you are running Chinese Windows.

## **Installing IBM SPSS Statistics 20 on Mac OS X**

### ***System Requirements for IBM SPSS Statistics***

#### **Operating System**

- Mac OS X 10.5 or higher (32- or 64-bit).

#### **Configuration**

- Intel processor.
- 1 gigabyte (GB) of RAM or more.
- 800 megabytes (MB) of available hard-disk space. If you install more than one help language, each additional language requires 60-70 MB of disk space.
- If using physical installation media, DVD/CD drive.
- XGA (1024x768) or a higher-resolution monitor.

#### **Instructions**

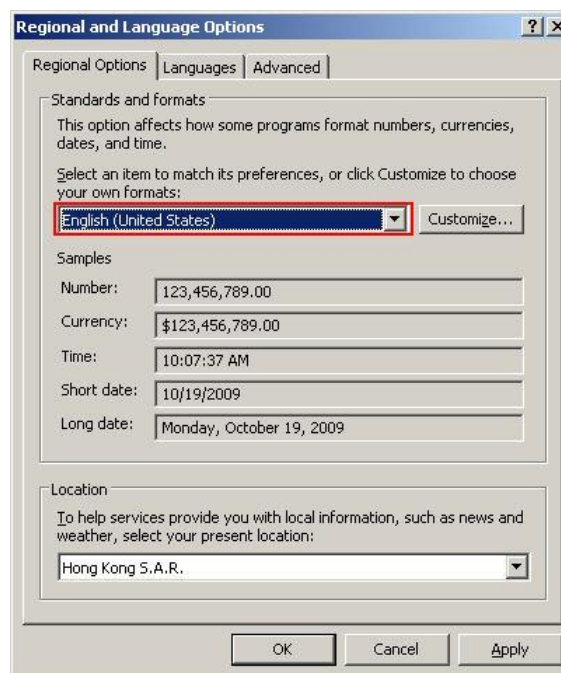
- Insert the DVD/CD into your DVD/CD drive.
- Double-click [DVD Drive]/IBM SPSS Statistics 20.0/Mac/SPSS\_Statistics\_20\_mac\_.dmg, and then follow the instructions that appear on the screen.
- Activate IBM SPSS Statistics 20 with your authorization code(s).

## Supplementary installation instructions for Chinese Operating System (Windows only)

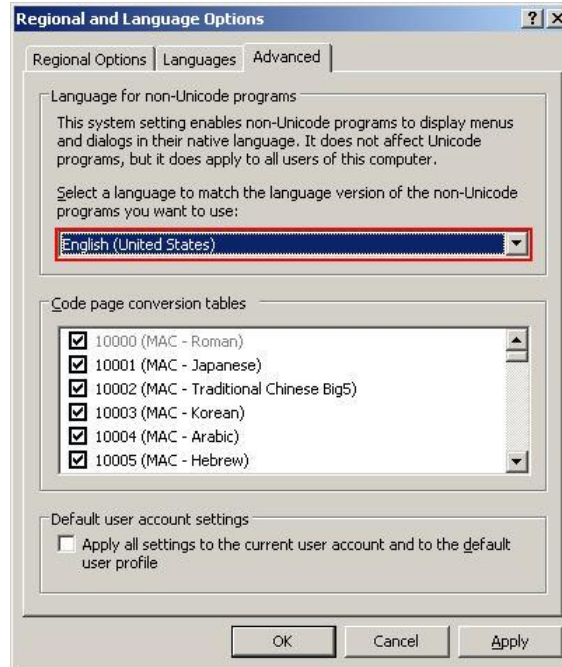
### *Installing IBM SPSS Statistics 20 in English*

By default, the setup program of IBM SPSS Statistics 20 refers to the system language setting of the OS to determine the display language throughout the installation process, and set also the GUI (Graphical User Interface) language when it first starts up. Some users may find it inconvenient especially to those foreign students or researchers who work in Hong Kong and use the computers provided by their institutions. To get rid of this, users could use the following procedure to change the OS' system language such that the installation language of IBM SPSS Statistics 20 will be switched to English.

- Open **Control Panel / 控制台** and choose **Regional and Language Options / 地區及語言選項**
- In the **Regional and Language Options** dialog box, change the **Standards and formats / 標準及格式** to **English (United States) / 英文（美國）**



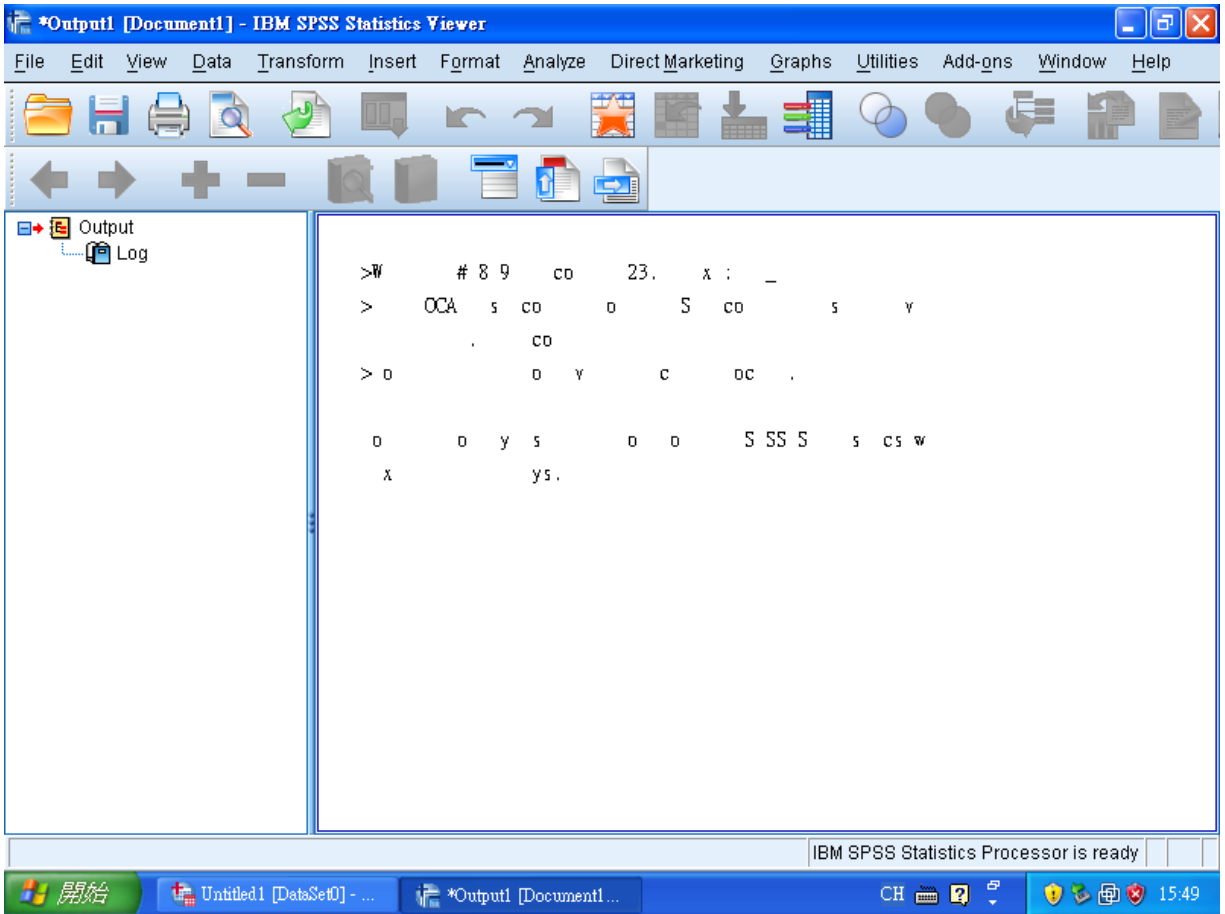
- Switch to **Advanced / 進階** tab, change the **Language for non-Unicode programs / 非 Unicode 程式的語言** to **English (United States) / 英文（美國）**



- Reboot your computer and install IBM SPSS Statistics 20. If you encounter **“unable to open the self-extracting executable file. the file is locked or in use by another process”** message, copy the installation file to a folder that contains no Chinese characters in its path name, e.g. C:\Temp and run the installation file from there.
- Change back the language setting as before if you wish and reboot your computer.

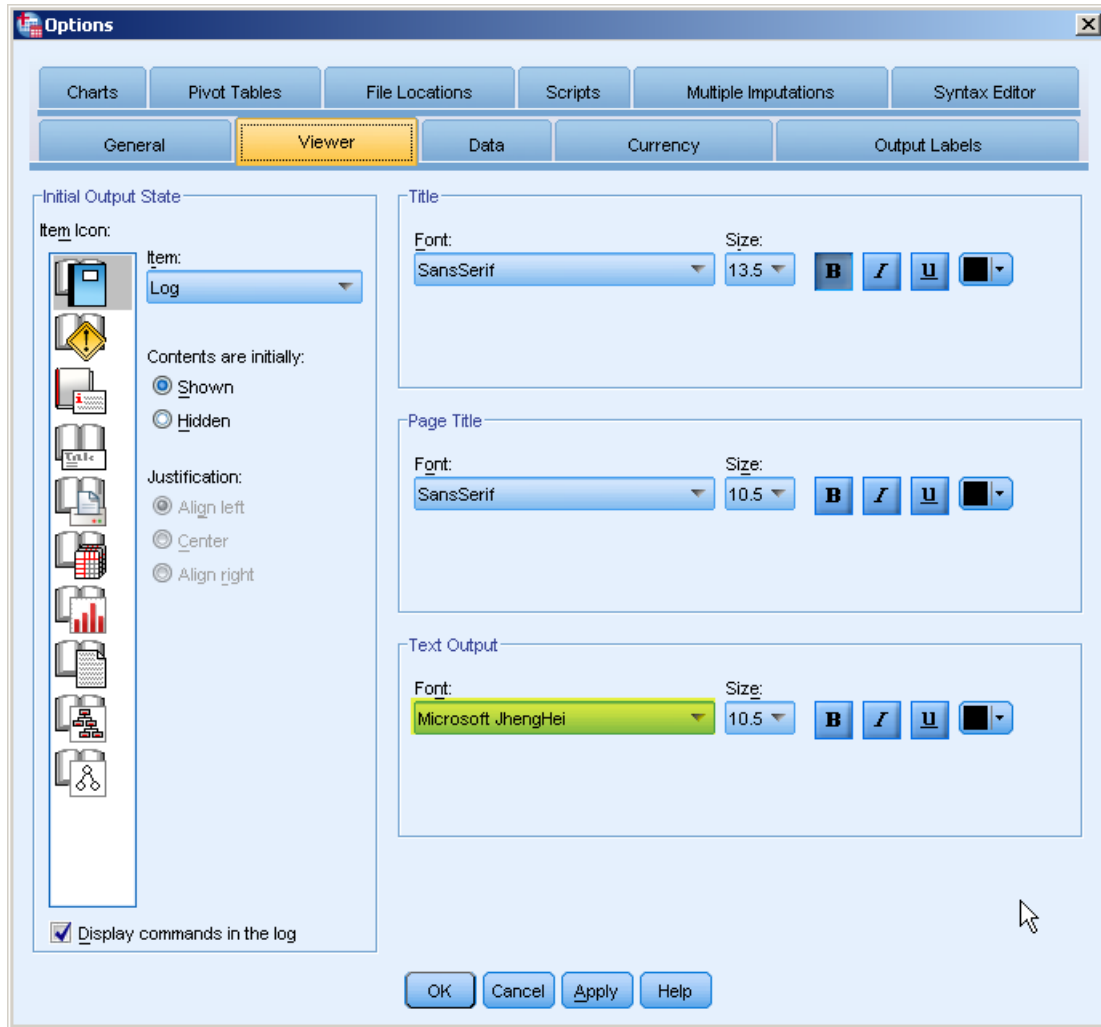
### ***Installing Traditional Chinese ClearType fonts for Windows XP***

If you are running IBM SPSS Statistics 20 under Windows XP (Windows Vista and Windows 7 users may skip this section), you may see some unrecognized strings in the output:



In this case you need to install Traditional Chinese ClearType fonts for XP. Please do the following

- Close IBM SPSS Statistics 20
- Download the font file at <http://www.microsoft.com/downloads/en/details.aspx?familyid=87E726A9-5C79-4A73-9347-78A557314DOB&displaylang=en> and install it
- Start IBM SPSS Statistics 20
- From the program menu, choose **Edit->Options** and select **Viewer** tab, change the font for **Text Output** to **Microsoft JhengHei**



## ***Fixing the locale problem in IBM SPSS Statistics 20***

Users may encounter the following warning message in IBM SPSS Statistics 20:

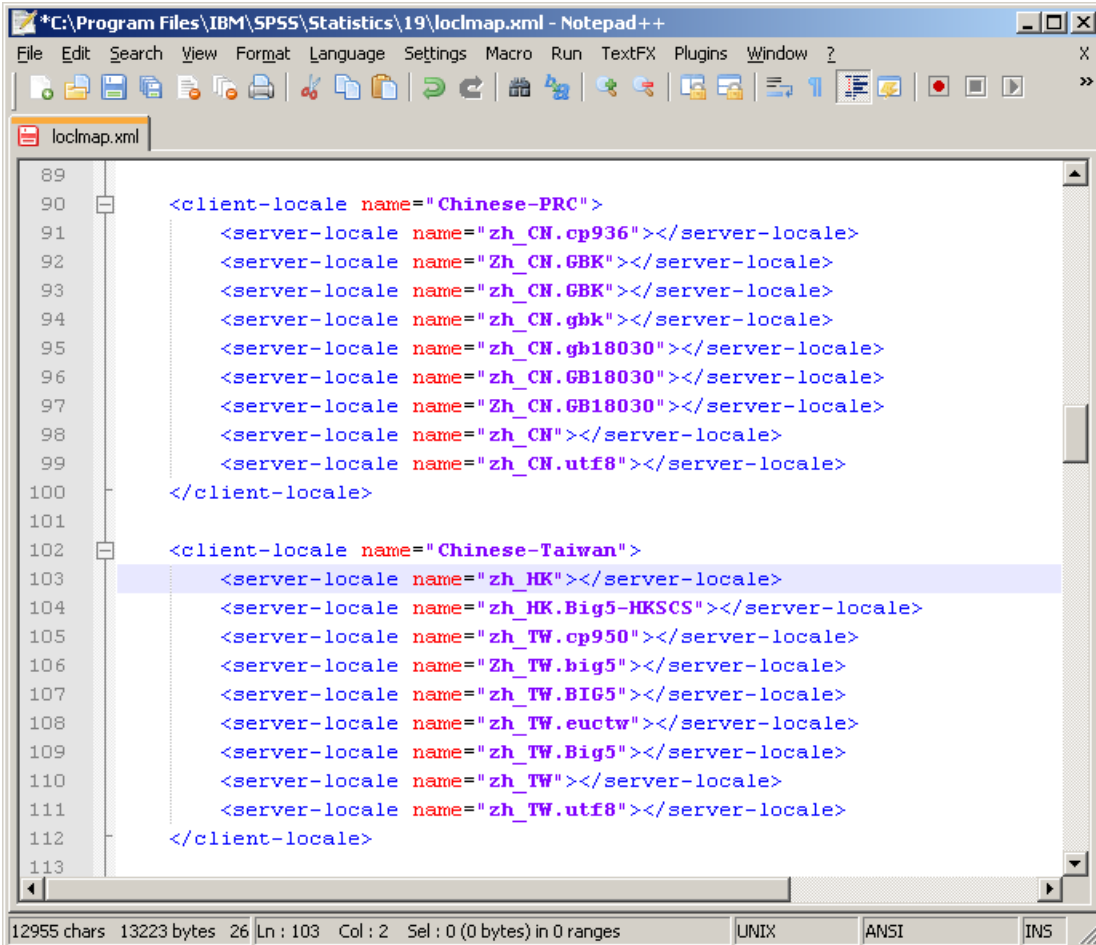
```
Warning # 849 in column 23. Text: zh_HK
The LOCALE subcommand of the SET command has an invalid parameter. It could
not be mapped to a valid backend locale.
```

This text means that IBM SPSS Statistics 20 couldn't find a suitable locale to set as its default language. This problem is caused by the missing locale zh\_HK which IBM SPSS Statistics 20 does not originally support in loclmap.xml. Please do the following to solve this problem:

- Log onto the computer as Administrator and locate the file loclmap.xml in the installation directory of IBM SPSS Statistics 20, i.e. **C:\Program Files\IBM\SPSS\Statistics\20**
- Open the xml file in an Editor and scroll down to **Chinese-Taiwan** and add a line **<server-locale name="zh\_HK"></server-locale>** above

```
<server-locale name="zh_HK.Big5-HKSCS"></server-locale>
```

so that you have something like the example below (please note the correct spelling within loclmap.xml)



The screenshot shows a Notepad++ window titled "C:\Program Files\IBM\SPSS\Statistics\19\loclmap.xml - Notepad++". The window displays the XML content of the loclmap.xml file. The code is as follows:

```
89
90     <client-locale name="Chinese-PRC">
91         <server-locale name="zh_CN.cp936"></server-locale>
92         <server-locale name="Zh_CN.GBK"></server-locale>
93         <server-locale name="zh_CN.GBK"></server-locale>
94         <server-locale name="zh_CN.gb18030"></server-locale>
95         <server-locale name="zh_CN.GB18030"></server-locale>
96         <server-locale name="Zh_CN.GB18030"></server-locale>
97         <server-locale name="zh_CN"></server-locale>
98         <server-locale name="zh_CN.utf8"></server-locale>
99     </client-locale>
100
101
102     <client-locale name="Chinese-Taiwan">
103         <server-locale name="zh_HK"></server-locale>
104         <server-locale name="zh_HK.Big5-HKSCS"></server-locale>
105         <server-locale name="zh_TW.cp950"></server-locale>
106         <server-locale name="Zh_TW.big5"></server-locale>
107         <server-locale name="zh_TW.BIG5"></server-locale>
108         <server-locale name="zh_TW.euctw"></server-locale>
109         <server-locale name="zh_TW.Big5"></server-locale>
110         <server-locale name="zh_TW"></server-locale>
111         <server-locale name="zh_TW.utf8"></server-locale>
112     </client-locale>
113
```

The status bar at the bottom indicates: 12955 chars 13223 bytes 26 Ln : 103 Col : 2 Sel : 0 (0 bytes) in 0 ranges. Encoding: UNIX, ANSI, INS.

- You can also use the loclmap.xml in this DVD under [DVD Drive]/IBM SPSS Statistics 20.0/Windows to replace the original one, i.e. C:\Program Files\IBM\SPSS\Statistics\20\loclmap.xml

### ***Manually changing the user interface of the IBM SPSS Statistics 20***

If the user interface of your IBM SPSS Statistics 20 is already in Chinese and you would like to change it to English, please follow these procedures to change

- In the IBM SPSS Statistics 20 menu, choose **Edit->Options / 編輯->選項**
- Change the **Output / 輸出** and the **User Interface / 使用者介面** to **English / 英文**

